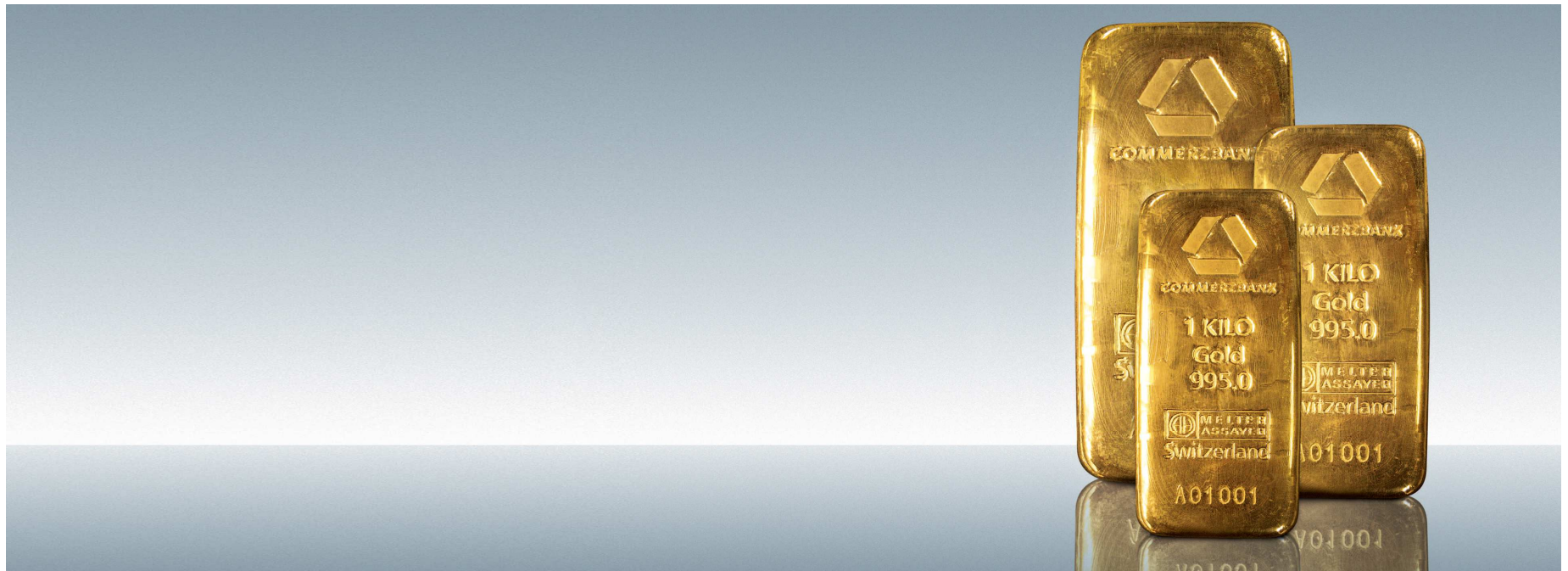


Bullion Weekly Technicals

Tuesday, 14 October 2014

Technical Outlook

Karen Jones
+44 207 475 1425
Karen.jones@commerzbank.com



For important disclosure information please see the end of the document.

Technical Outlook

Markets upside corrective short term

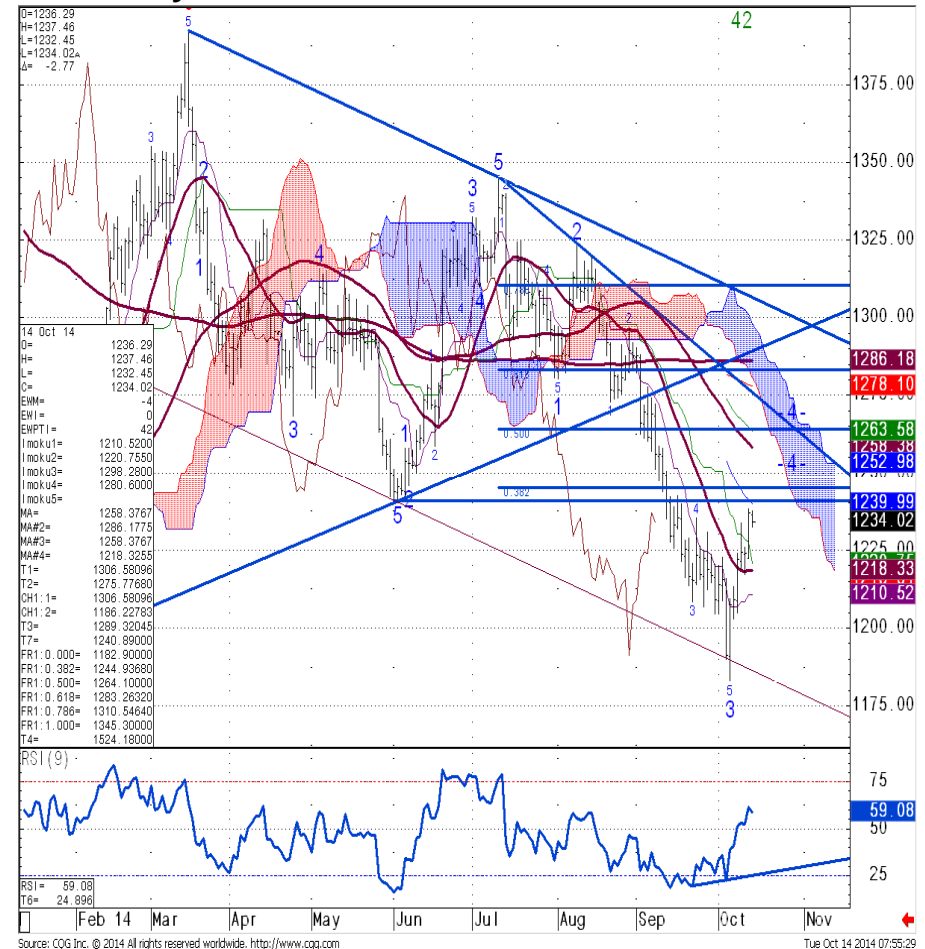
Market	Short term view (1-3 weeks)
Gold:	Rally meets initial corrective target 1220/30, would allow for a deeper retracement to 1252/69 prior to failure.
Silver:	Market correcting higher looking for this to terminate circa 17.82/18.32.
Gold/Silver Ratio:	Up move has reversed ahead of the 72.60/78.6% retracement and we suspect may be topping.
Palladium:	Palladium looking for corrective rebound to terminate circa 815/35 for losses to the 200 week ma at 724.
Platinum:	Market has reached the 1186/ Fibonacci support and target and has seen a strong rebound. Allow for a deeper corrective rally near term

Spot Gold

Rally meets initial corrective target 1220/30, would allow for a deeper retracement to 1252/69 prior to failure.

- > Gold as mentioned last week following the divergence of the daily RSI, we gave seen a corrective rebound into the 1220./40 band. Also found in this vicinity is the 1241 June low and ideally this should cap the topside and provoke failure. However we notice that the Elliot wave count on the daily is suggesting that we should allow for a deeper retracement to 1252/69 and the intraday charts is also suggesting that we allow for a deeper retracement
- > Currently the market will maintain a negative bias while rallies are capped by the 50% retracement of the move down from 1264 and the 200 day ma at 1286.
- > Dips will find initial support at 1218/1210, failure here should see losses to the 1180 region again. Below the 1180 2013 low. we favour a move to initially the 1155/61.8% retracement of the entire move from 2008.

Gold Daily Chart



Support	Resistance	1-Week View	1-Month View
1218/1210	1240/41	➔	➔
1184.23/1180	1252/1269		

Gold - Weekly Chart

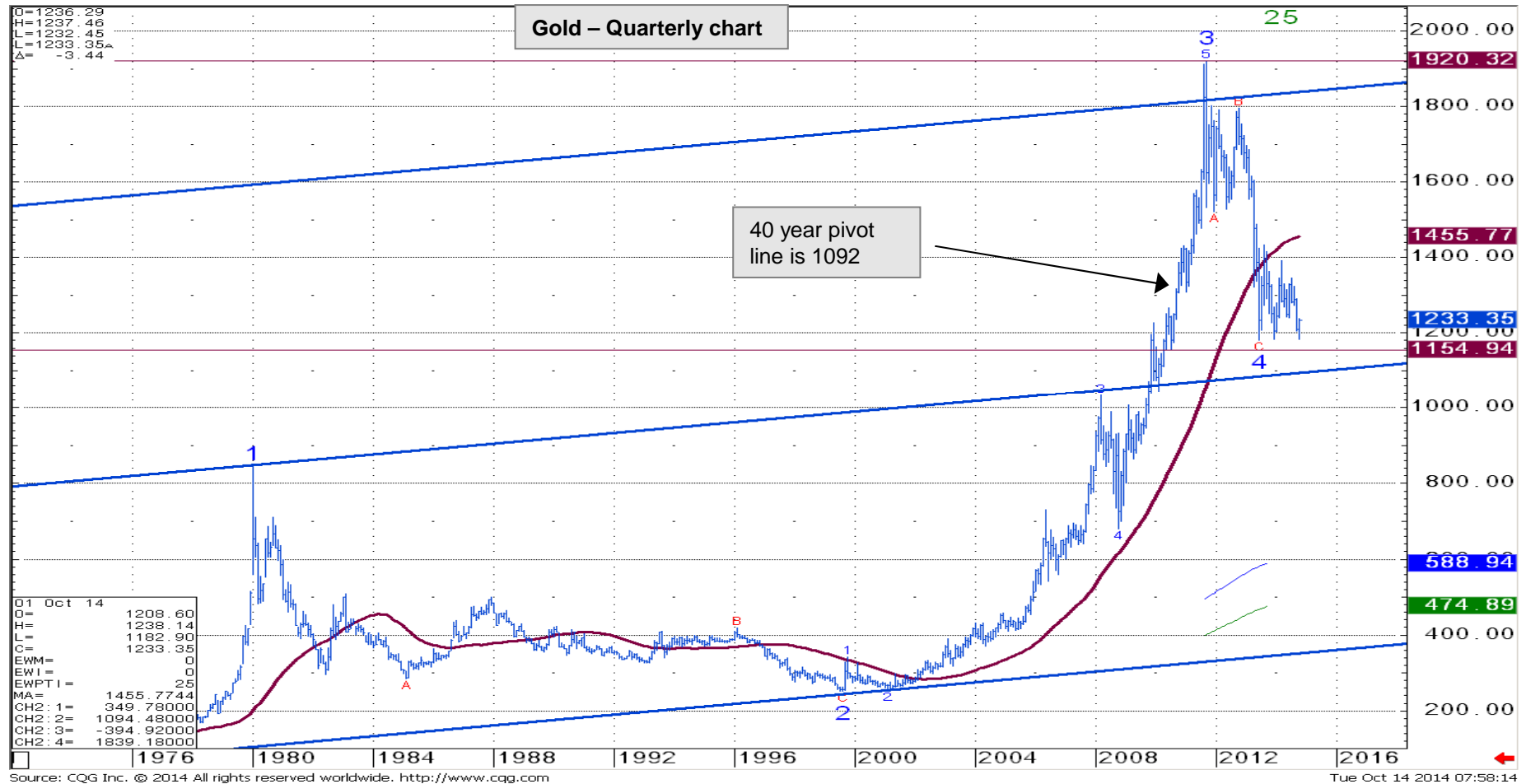
2013 lows circa 1184-1180 holding

Gold Weekly Chart



Gold - Longer term view is negative

Below 1180 will see a downside target of 1092/1086 engage

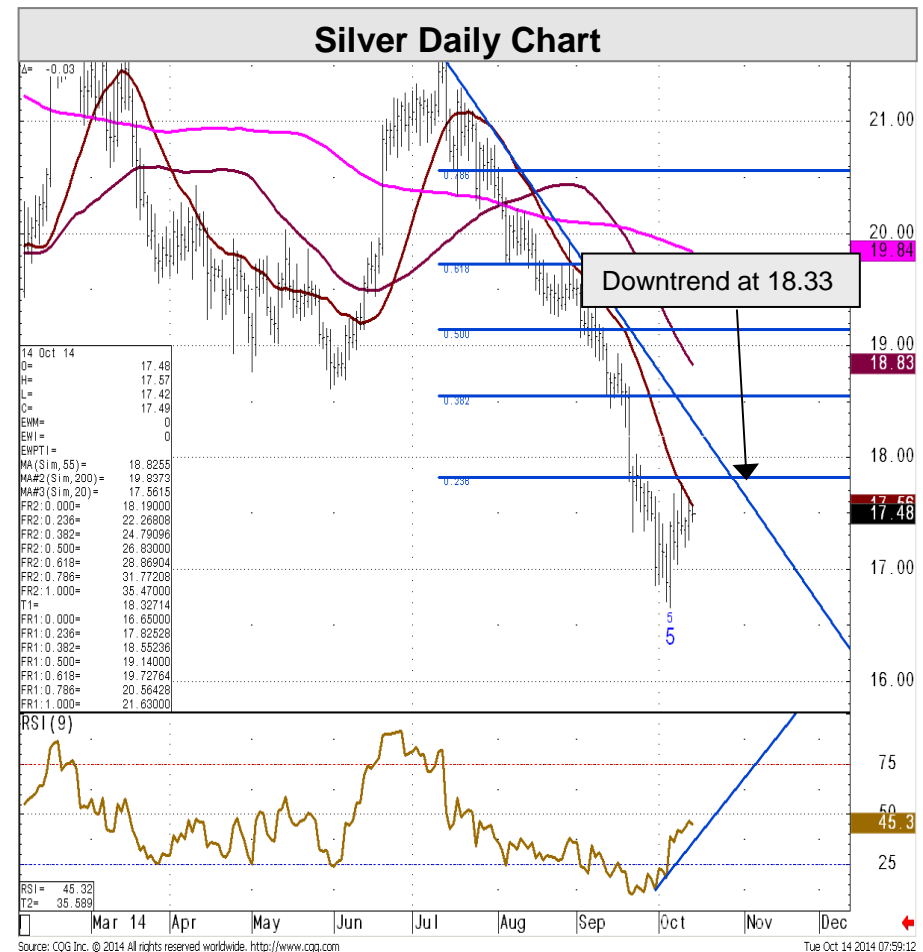


Silver - Daily Chart

Market correcting higher looking for this to terminate circa 17.82/18.32

- › The silver market is seeing a very near term upside correction having recently sold off to its medium term target of the 17.27/78.6% retracement of the entire move from 2008. The spike down to 1665 looked exhaustive and was accompanied by a divergence of the daily RSI.
- › The rally has so far reached the 20 day ma at 17.56 and is currently capped here – this may be the end of the move but currently we remain unable to rule out a corrective rebound into the 17.82-18.32 band (the 23.6% retracement and downtrend). Provided that the rally is contained by the 3 month downtrend at 18.32 a negative bias will remain entrenched. The previous low at 18.19 charted in 2013 will also offer further resistance.
- › Failure to hold over 17.19 the 10th October low should be enough for a slide to 16.65. Below here will target the 14.63 February 2010 low. There is scope for the 13.95/78.6% retracement of the entire move from the 2001 low, but we would expect to see the downmove terminate ahead of here.
- › Only above the 18.32 downtrend would delay our negative view and signal a deeper recovery to the 19.48/50% retracement and potentially the 19.84 200 day m.a.

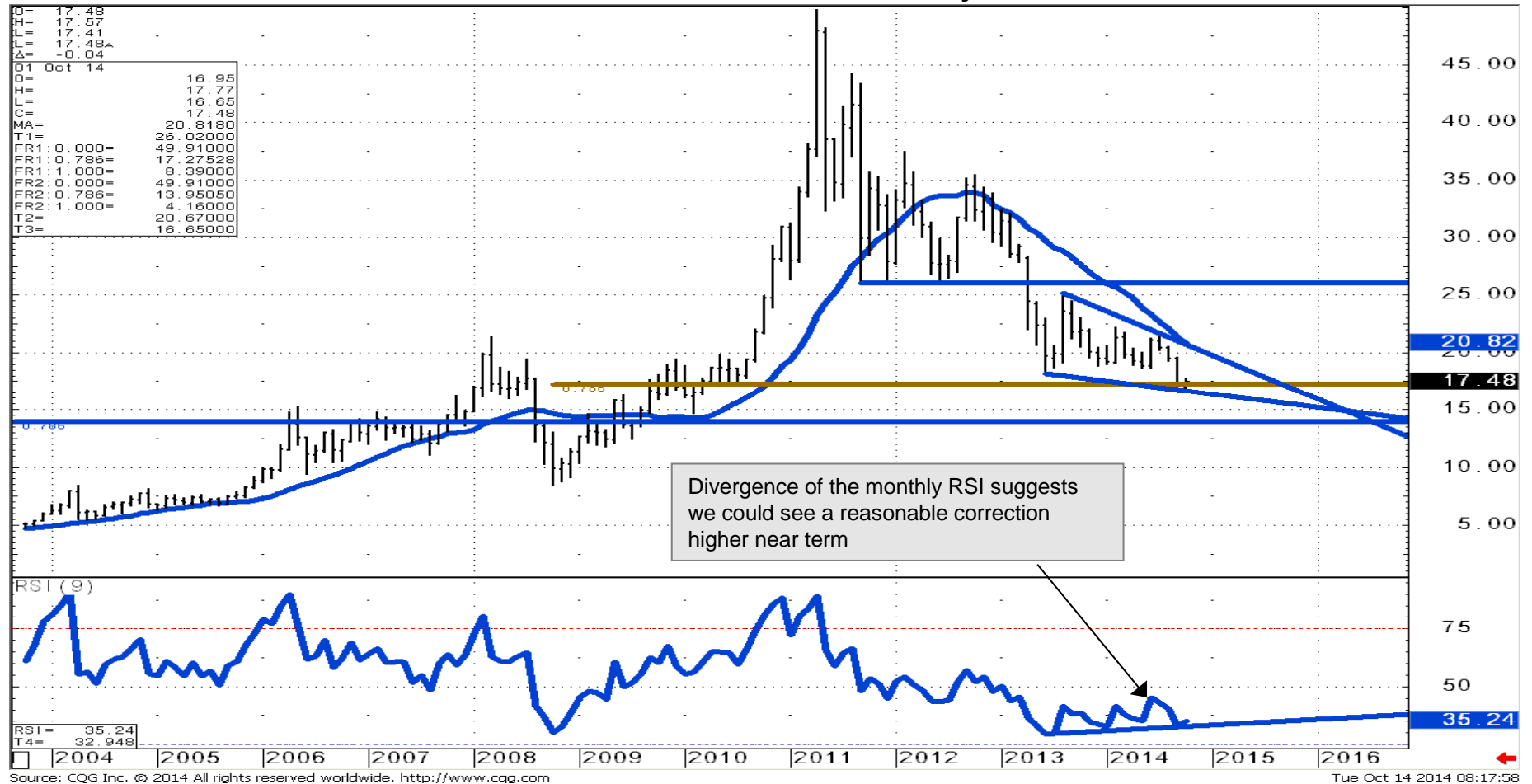
Support	Resistance	1-Week View	1-Month View
17.27/19	17.82/18.32	➔	➔
16.65/16.28	19.84		



Silver – longer term charts

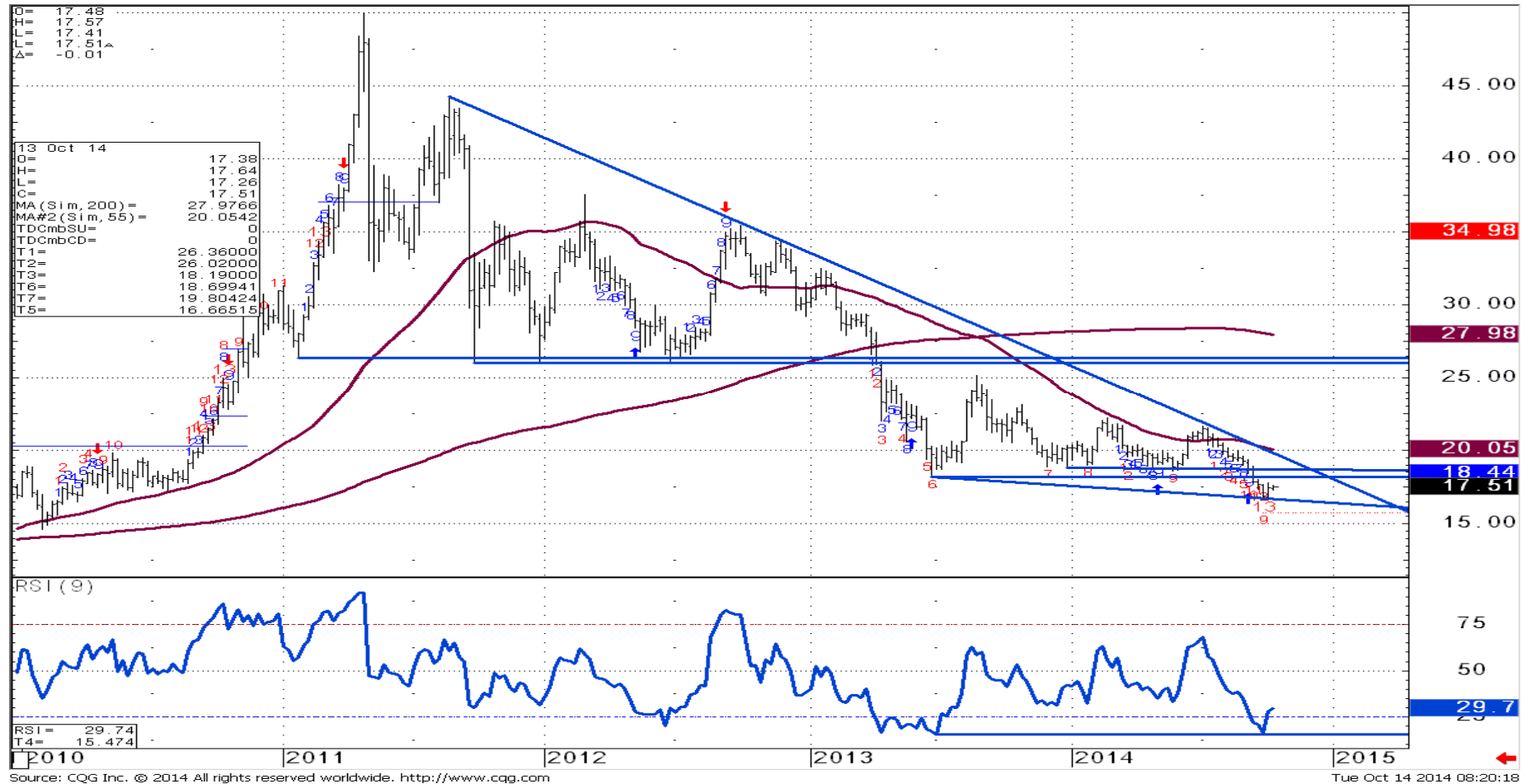
Market has sold off to the 17.27 long term Fibos, likely to see some consolidation around here

Silver Monthly Chart



Silver weekly chart

13 count and complex divergence of the RSI suggest that the downmove is done for now.



Gold/Silver Ratio - Daily Chart

Up move has reversed ahead of the 72.60/78.6% retracement and we suspect may be topping.

- › The gold/silver ratio is in 4 year highs. But has failed to make much impression on 71.00 and is starting to struggle - we suspect that the market may have topped - the Elliott wave count warns that this is the end stage of the move. However the 67.35/66.50 zone will need to be eroded to confirm.
- › Longer term we look for 72.60, the 78.6% retracement of the move from 2008 to cap the topside.
- › This is where we would expect to see the move terminate.

Gold/Silver Ratio Daily Chart

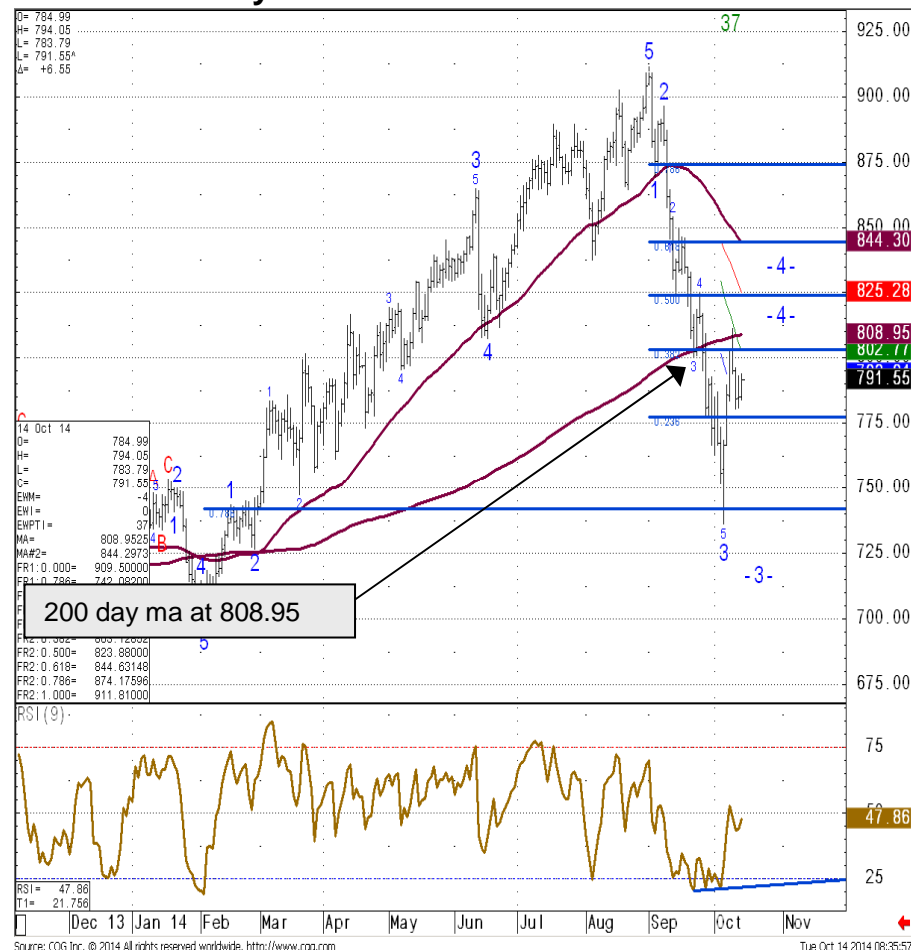


Palladium - Daily Chart

Palladium looking for corrective rebound to terminate circa 815/35 for losses to the 200 week ma at 724.

- › The market has recently sold off towards and reversed just ahead of the 200 week ma at 724. The rally is viewed as corrective only but currently looks like it could extend further. The Elliott wave count on the daily chart is indicated to terminate circa 815/8.35 and we will regard the market as still offered below the 849.75/15th September high.
- › The divergence of the daily RSI and Elliott wave count implies that this rebound is corrective only. Currently we suspect that the rally will halt somewhere between the 200 day ma at 808.95 and the 55 day ma at 844.30. Provided it does so, we will look for further losses to retest the 200 week ma and beyond towards the 696.50 2014 low.

Palladium Daily Chart



Support	Resistance	1-Week View	1-Month View
780/773	809	➔	➔
736/724	844.32/849.75		

Palladium – Weekly Chart

Strong rebound from 200 week ma, suggests further upside corrective scope

Palladium Weekly Chart



Source: CQG Inc. © 2014 All rights reserved worldwide. <http://www.cqg.com>

Tue Oct 14 2014 08:59:10

Platinum

Market has reached the 1186/ Fibonacci support and target and has seen a strong rebound.

Allow for a deeper corrective rally

- › Platinum recently sold off to 1200/1186, the 61.8% retracement of the entire move up from 2008 and our downside target. The recent low was 1185.69. The spike down to here on the daily chart looks exhaustive and together with the 13 count (TOM deMark) suggests that we are likely to see a corrective rebound, **it is possible that this is the end of the downmove for now.**
- › Rallies will find solid resistance offered by the 1288.63, 2013 low, but we suspect will extend higher to the 38.2% retracement at 1315 and possibly 1355, the 50% retracement. Currently the market will remain upside corrective while above 1250.
- › Loss of 1250 should undermine immediate stability and below 1185 will trigger losses to the 1084.50 2009 low.

Platinum Daily Chart

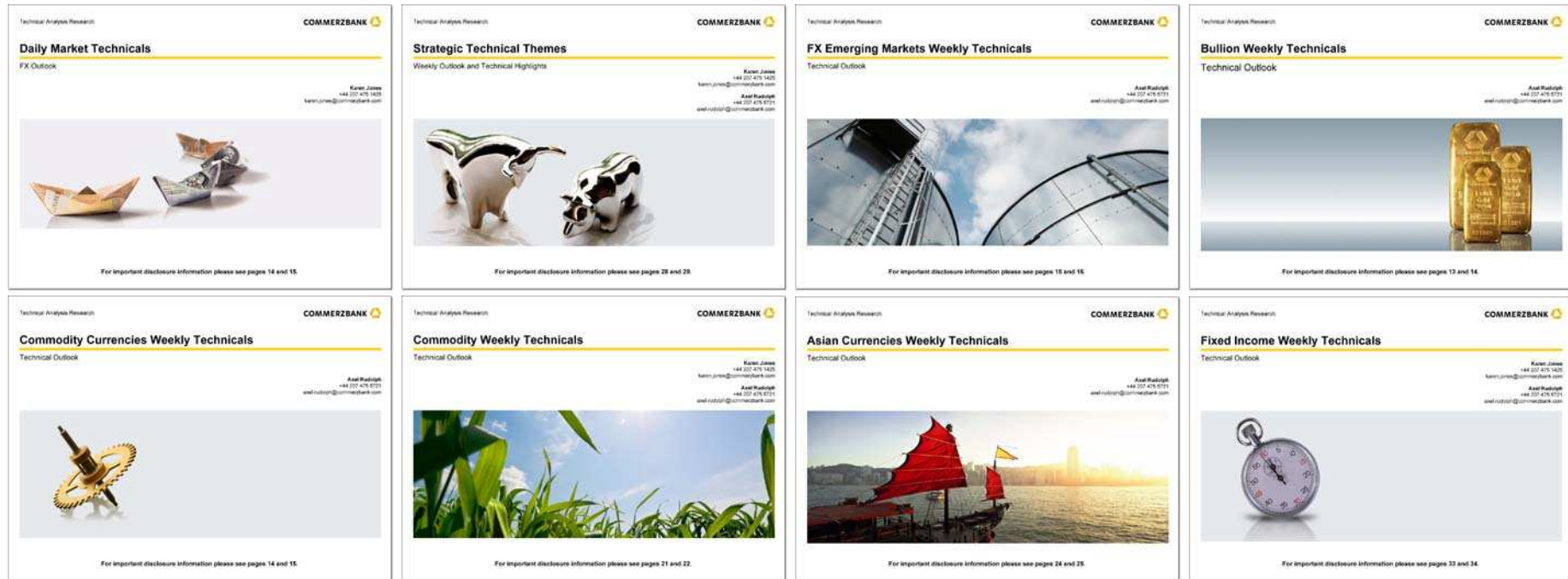


Support	Resistance	1-Week View	1-Month View
1250	1288.63/1299	➔	➔
1186/1185.69	1315/1355		

Platinum weekly chart

Market has sold off to and reversed from the 1186.50/61.8% retracement





Other technical analysis reports we publish are:

- Monday:** Daily Market Technicals (FX), FX Emerging Markets Technicals;
- Tuesday:** Daily Market Technicals (FX), Commodity Weekly Technicals;
- Wednesday:** Daily Market Technicals (FX), Commodity Currencies Weekly Techn., Strategic Technical Themes;
- Thursday:** Daily Market Technicals (FX), Asian Currencies Weekly Technicals;
- Friday:** Daily Market Technicals (FX), Fixed Income Weekly Technicals.

This document has been created and published by the Corporates & Markets division of Commerzbank AG, Frankfurt/Main or Commerzbank's branch offices mentioned in the document. Commerzbank Corporates & Markets is the investment banking division of Commerzbank, integrating research, debt, equities, interest rates and foreign exchange.

The author(s) of this report, certify that (a) the views expressed in this report accurately reflect their personal views; and (b) no part of their compensation was, is, or will be directly or indirectly related to the specific recommendation(s) or views expressed by them contained in this document. The analyst(s) named on this report are not registered / qualified as research analysts with FINRA and are not subject to NASD Rule 2711.

Disclaimer

This document is for information purposes only and does not take into account specific circumstances of any recipient. The information contained herein does not constitute the provision of investment advice. It is not intended to be and should not be construed as a recommendation, offer or solicitation to acquire, or dispose of, any of the financial instruments and/or securities mentioned in this document and will not form the basis or a part of any contract or commitment whatsoever. Investors should seek independent professional advice and draw their own conclusions regarding suitability of any transaction including the economic benefits, risks, legal, regulatory, credit, accounting and tax implications.

The information in this document is based on public data obtained from sources believed by Commerzbank to be reliable and in good faith, but no representations, guarantees or warranties are made by Commerzbank with regard to accuracy, completeness or suitability of the data. Commerzbank has not performed any independent review or due diligence of publicly available information regarding an unaffiliated reference asset or index. The opinions and estimates contained herein reflect the current judgement of the author(s) on the date of this document and are subject to change without notice. The opinions do not necessarily correspond to the opinions of Commerzbank. Commerzbank does not have an obligation to update, modify or amend this document or to otherwise notify a reader thereof in the event that any matter stated herein, or any opinion, projection, forecast or estimate set forth herein, changes or subsequently becomes inaccurate.

This communication may contain trading ideas where Commerzbank may trade in such financial instruments with customers or other counterparties. Any prices provided herein (other than those that are identified as being historical) are indicative only, and do not represent firm quotes as to either size or price. The past performance of financial instruments is not indicative of future results. No assurance can be given that any financial instrument or issuer described herein would yield favourable investment results. Any forecasts or price targets shown for companies and/or securities discussed in this document may not be achieved due to multiple risk factors including without limitation market volatility, sector volatility, corporate actions, the unavailability of complete and accurate information and/or the subsequent transpiration that underlying assumptions made by Commerzbank or by other sources relied upon in the document were inapposite.

Commerzbank and or its affiliates may act as a market maker in the instrument(s) and or its derivative that has been mentioned in our research reports. Employees of Commerzbank and or its affiliates may provide written or oral commentary, including trading strategies, to our clients and business units that may be contrary to the opinions conveyed in this research report. Commerzbank may perform or seek to perform investment banking services for issuers mentioned in research reports.

Neither Commerzbank nor any of its respective directors, officers or employees accepts any responsibility or liability whatsoever for any expense, loss or damages arising out of or in any way connected with the use of all or any part of this document.

Commerzbank may provide hyperlinks to websites of entities mentioned in this document, however the inclusion of a link does not imply that Commerzbank endorses, recommends or approves any material on the linked page or accessible from it. Commerzbank does not accept responsibility whatsoever for any such material, nor for any consequences of its use.

This document is for the use of the addressees only and may not be reproduced, redistributed or passed on to any other person or published, in whole or in part, for any purpose, without the prior, written consent of Commerzbank. The manner of distributing this document may be restricted by law or regulation in certain countries, including the United States. Persons into whose possession this document may come are required to inform themselves about and to observe such restrictions. By accepting this document, a recipient hereof agrees to be bound by the foregoing limitations.

Disclaimer (contd.)

Additional notes to readers in the following countries:

Germany: Commerzbank AG is registered in the Commercial Register at Amtsgericht Frankfurt under the number HRB 32000. Commerzbank AG is supervised by the German regulator Bundesanstalt für Finanzdienstleistungsaufsicht (BaFin), Marie-Curie-Strasse 24-28, 60439 Frankfurt am Main, Germany.

United Kingdom: This document has been issued or approved for issue in the United Kingdom by Commerzbank AG London Branch. Commerzbank AG, London Branch is authorised by Bundesanstalt für Finanzdienstleistungsaufsicht (BaFin) and subject to limited regulation by the Financial Conduct Authority and Prudential Regulation Authority. Details on the extent of our regulation by the Financial Conduct Authority and Prudential Regulation Authority are available from us on request. This document is directed exclusively to eligible counterparties and professional clients. It is not directed to retail clients. No persons other than an eligible counterparty or a professional client should read or rely on any information in this document. Commerzbank AG, London Branch does not deal for or advise or otherwise offer any investment services to retail clients.

United States: This document has been approved for distribution in the US under applicable US law by Commerz Markets LLC ('Commerz Markets'), a wholly owned subsidiary of Commerzbank AG and a US registered broker-dealer. Any securities transaction by US persons must be effected with Commerz Markets, and transaction in swaps with Commerzbank AG. Under applicable US law; information regarding clients of Commerz Markets may be distributed to other companies within the Commerzbank group. This research report is intended for distribution in the United States solely to "institutional investors" and "major U.S. institutional investors," as defined in Rule 15a-6 under the Securities Exchange Act of 1934. Commerz Markets is a member of FINRA and SIPC. Commerzbank AG is a provisionally registered swap dealer with the CFTC.

Canada: The information contained herein is not, and under no circumstances is to be construed as, a prospectus, an advertisement, a public offering, an offer to sell securities described herein, solicitation of an offer to buy securities described herein, in Canada or any province or territory thereof. Any offer or sale of the securities described herein in Canada will be made only under an exemption from the requirements to file a prospectus with the relevant Canadian securities regulators and only by a dealer properly registered under applicable securities laws or, alternatively, pursuant to an exemption from the dealer registration requirement in the relevant province or territory of Canada in which such offer or sale is made. Under no circumstances is the information contained herein to be construed as investment advice in any province or territory of Canada and is not tailored to the needs of the recipient. In Canada, the information contained herein is intended solely for distribution to Permitted Clients (as such term is defined in National Instrument 31-103) with whom Commerz Markets LLC deals pursuant to the international dealer exemption. To the extent that the information contained herein references securities of an issuer incorporated, formed or created under the laws of Canada or a province or territory of Canada, any trades in such securities may not be conducted through Commerz Markets LLC. No securities commission or similar regulatory authority in Canada has reviewed or in any way passed upon these materials, the information contained herein or the merits of the securities described herein and any representation to the contrary is an offence.

European Economic Area: Where this document has been produced by a legal entity outside of the EEA, the document has been re-issued by Commerzbank AG, London Branch for distribution into the EEA.

Singapore: This document is furnished in Singapore by Commerzbank AG, Singapore branch. It may only be received in Singapore by an institutional investor as defined in section 4A of the Securities and Futures Act, Chapter 289 of Singapore ("SFA") pursuant to section 274 of the SFA.

Hong Kong: This document is furnished in Hong Kong by Commerzbank AG, Hong Kong Branch, and may only be received in Hong Kong by 'professional investors' within the meaning of Schedule 1 of the Securities and Futures Ordinance (Cap.571) of Hong Kong and any rules made there under.

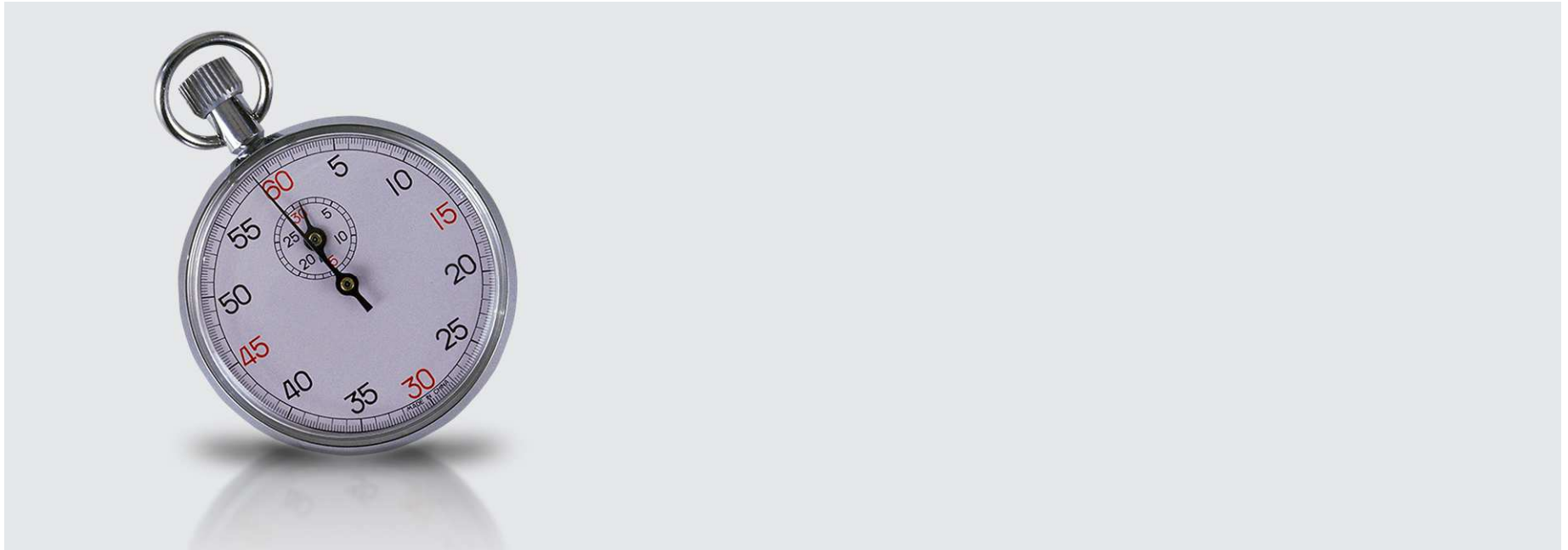
Japan: Commerzbank AG, Tokyo Branch is responsible for the distribution of Research in Japan. Commerzbank AG, Tokyo Branch is regulated by the Japanese Financial Services Agency (FSA).

Australia: Commerzbank AG does not hold an Australian financial services licence. This document is being distributed in Australia to wholesale customers pursuant to an Australian financial services licence exemption for Commerzbank AG under Class Order 04/1313. Commerzbank AG is regulated by Bundesanstalt für Finanzdienstleistungsaufsicht (BaFin) under the laws of Germany which differ from Australian laws.

© Commerzbank AG 2014. All rights reserved. Version 9.17

Commerzbank Corporates & Markets

Frankfurt	London	New York	Singapore Branch	Hong Kong Branch
Commerzbank AG	Commerzbank AG London Branch	Commerz Markets LLC	Commerzbank AG	Commerzbank AG
DLZ - Gebäude 2, Händlerhaus Mainzer Landstraße 153 60327 Frankfurt	PO BOX 52715 30 Gresham Street London, EC2P 2XY	225 Liberty Street, 32nd floor New York, NY 10281 - 1050	71, Robinson Road, #12-01 Singapore 068895	29/F, Two IFC 8 Finance Street Central Hong Kong
Tel: + 49 69 136 21200	Tel: + 44 207 623 8000	Tel: + 1 212 703 4000	Tel: +65 631 10000	Tel: +852 3988 0988



Karen Jones
Head of FICC Technical Analysis

Tel. +44 207 475 1425
Mail karen.jones@commerzbank.com

Axel Rudolph
Senior Technical Analyst

Tel. +44 207 475 5721
Mail axel.rudolph@commerzbank.com

Zentrale
Kaiserplatz
Frankfurt am Main
www.commerzbank.de

Postfachanschrift
60261 Frankfurt am Main
Tel. +49 (0)69 / 136-20
Mail info@commerzbank.com